

# Encanvas Social Office

Work and think together



## What you need to know about Encanvas Social Office™

- Design your ideal (secure) social business networking environment and then publish instantly to the Microsoft™ Azure® cloud or your on-premises web server
- Expose your true organization with social graphing
- Identify where pockets of innovation and talent exist in your enterprise
- Improve communications and collaboration (however large it is!)
- Build trusted ties with internal and external communities
- Author new Web Service apps using point-and-click design to produce your own App Store
- Build the collective intelligence of your enterprise without compromising on security

## Encanvas Social Office™ includes the following Middle-Apps™

- Squork™ Secure and live online web-chat and business social networking
- Webshow360™ live web presentations
- Secure Transfer™ FTP file transfer replacement
- Vector-Map-Format™ (VMF) geo-spatial data management
- DynamicZoom™ data visualization
- S-Tag™ semantic content management
- Social Graph™ social network graphing
- Information Flow Designer™ for the design of machine automated events

## Other products in the Encanvas software range



**Americas**  
One Exchange Place  
Suite 900  
Jersey City  
NJ 07302  
United States of America  
Jersey City Office (US TECH)  
t. +1 201-524-9600  
e. americas@encanvas.com

**India**  
B-41, Sector - 63  
Noida - 201301  
U.P., India  
Delhi Office (US TECH)  
t. 0120-4315902  
e. asia@encanvas.com

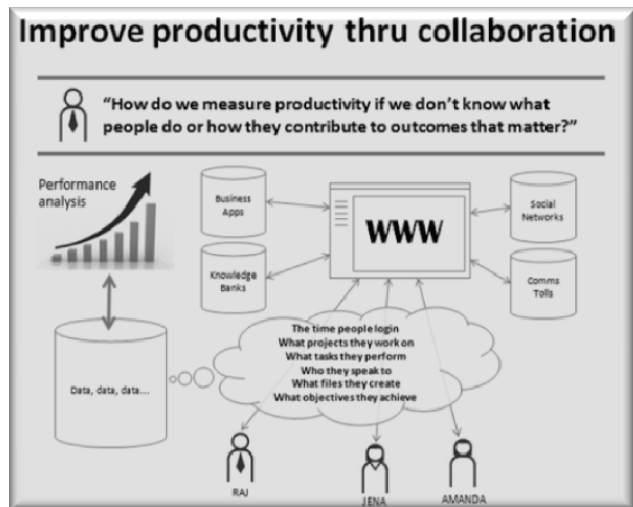
**Europe**  
4 Oxford Court  
St James Road  
Brackley  
Northamptonshire  
United Kingdom  
t. +44 (0) 1280 700535  
e. europe@encanvas.com

**Africa**  
Grapevine House  
Silverwood Close  
Steenberg Office Park  
Tokai 7945  
South Africa  
t. +27 (0) 21 701 3882  
e. info.sa@encanvas.com

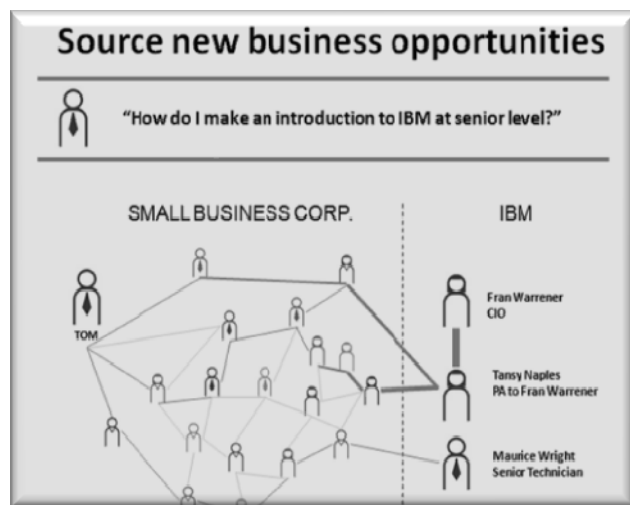
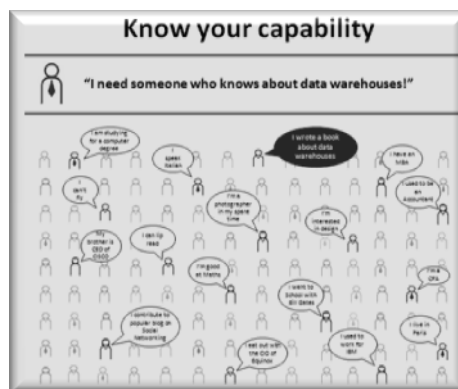
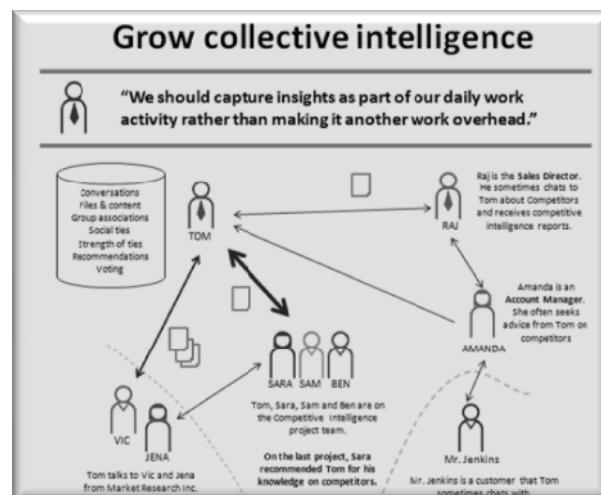
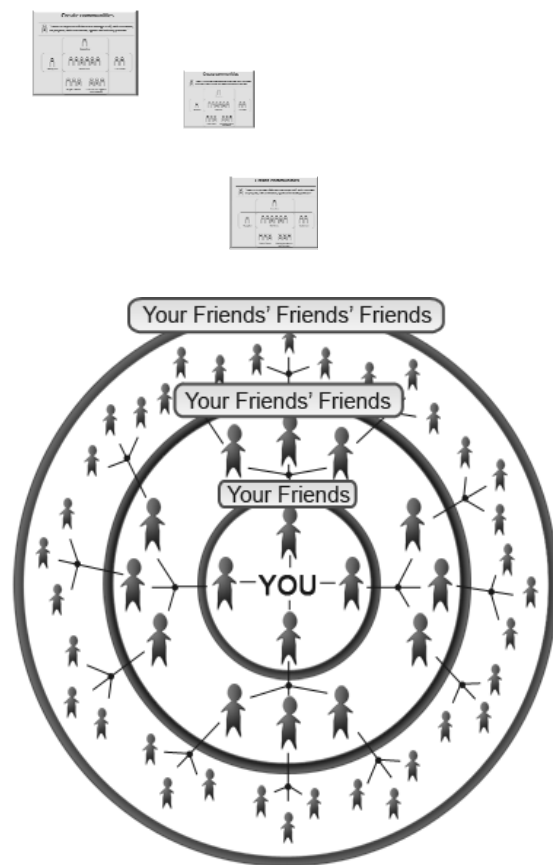
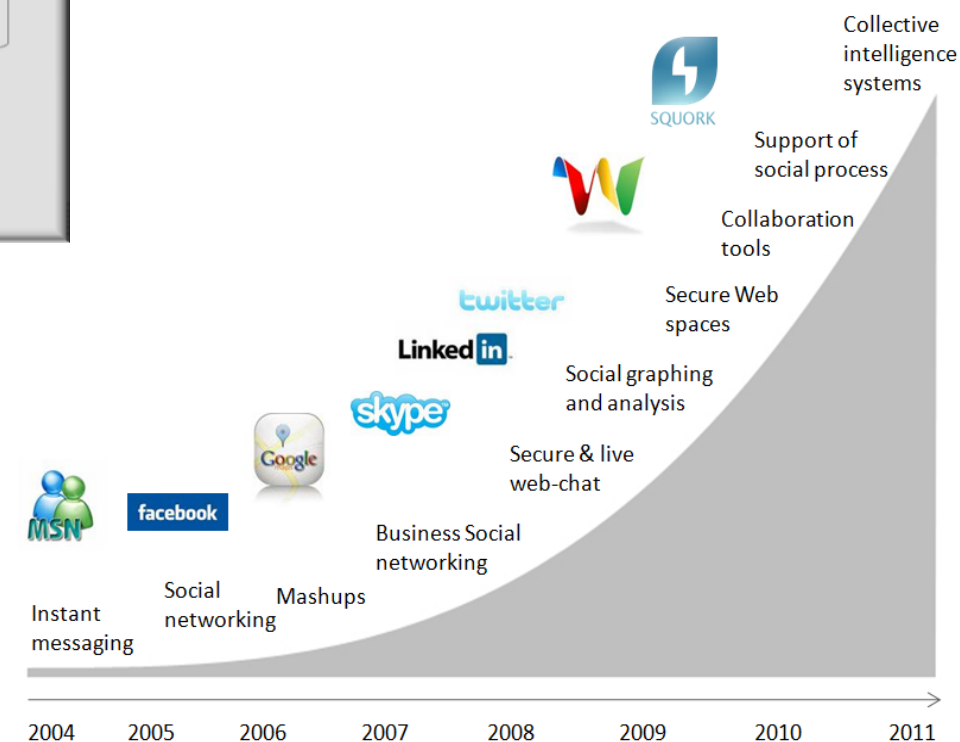
IN BRIEF

The popularity of social networking is causing business people to consider the potential risks and rewards of social networking for their business. There are many sides to social networking; creating an energized workplace, sourcing innovation from pockets of the enterprise, nurturing deeper relationships with partners and customers through collaborative web communities and harnessing social ties to reach out to new prospects. No single technology method (i.e. wiki, twitter, chat, blog, desk-share etc.) can satisfy every need. That's why Encanvas has developed Encanvas Social Office™. It's a social operating system for your enterprise that employs unique innovations to dovetail your information worker environment to the way your enterprise works.

A **Social Operating System** provides systematic management and facilitation of human social relationships and interactions.



## Evolution of the Social Office



<b>Security</b>	Identity & access controls Data governance & security Systems, data transfer & networks Rights management IP ownership	<b>Relationships</b>	Directory and lookup Social networks Social graphing Recommendations Social coordination Spam control	<b>Communication</b>	Person-to-person comms Group comms File transfer Web-chat VOIP Email SMS
<b>Content</b>	Semantic tag content management Data visualization tools Recommendations Collective intelligence Search	<b>Collaboration</b>	Desk sharing Document collaboration Recommendation Project management Activity management Outcome measures	<b>Commerce</b>	Classified advertising Auctions Shopping Recommendations Knowledge markets Talent markets
<b>App Store</b>	Re-usable applications and mashups Mobility Maps Business Intelligence Dashboards Reports (etc.)	<b>Data Integration</b>	Web Services Data mashups Data Connectors Information Flow Design	<b>Agile Dev.</b>	Agile dev. tools Logic Data mart and store creation Custom programming Application Life-cycle

